

Capatect Capapor® Rahmen-, Gurt- und Gesimsprofile 121/010-011

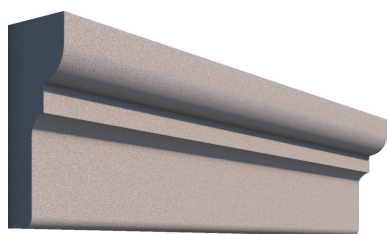
Profiles for facade design and decorative elements for creative interior effects

Product Description

Field of Application	Decor and façade profiles made of lightweight material in ashlar format for decorative façade design. Suitable for use on solid substrates and Capatect façade systems based on EPS and mineral wool insulation material. For reconstruction of stylistic elements on historical facades in need of renovation. For the design of interior spaces.
Material Properties	<ul style="list-style-type: none"> ■ Design element based on mineral lightweight granules ■ Paintable with suitable facade paints ■ Excellent optical and technical quality ■ Easy to fix with "Capatect Capapor Profilkleber 121/109" (profile adhesive) ■ Nearly unlimited design freedom through standard profiles and order-related special designs
Packaging/Package Size	Individual elements packaging
Colours	grey
Storage	Dry, cool and protected from moisture and direct sunlight on a flat surface to avoid warping.
Technical Data	<ul style="list-style-type: none"> ■ Raw density: approx. 500 kg/m³ ■ Fire behaviour: A2-s1, d0 according to DIN EN 13501-1 (up to a max of 100 mm profile thickness) ■ Coefficient of thermal expansion: approx. 10.5*10⁻⁶ K⁻¹ according to DIN EN 14617-11
Supplementary Product	<ul style="list-style-type: none"> ■ Capatect Capapor Profilkleber 121/109 ■ Capatect Capapor Profilspachtel 121/110 ■ Capatect Dekorprofildübel 677
Product No.	121/010-011

Application

Substrate Preparation	All substrates must be load-bearing, level, clean and free from adhesion-reducing residues. For external thermal insulation composite systems, glue the profiles on the suitable and dry base coat. The evenness of the surface of the cured base coat should not exceed a pitch of 2 mm in relation to the maximum edge length of the "Rahmen-, Gurt- oder Gesimsprofilen" to be applied. Check concrete and untreated plaster for load-bearing capacity, remove release agent residues and loose parts. Prime absorbent substrates accordingly.
Application Conditions	During processing, temperatures must not fall below + 5 °C. Do not apply on surfaces heated up by the sun, or during rain or strong wind.



Drying/Drying Time	At 20° C and 65% RH approx. 24 hours for the façade profile bonded with "Capatect Capapor Profilkleber 121/109". Lower temperatures and higher humidity extend the curing time.
Tool Cleaning	Immediately after use with water.
Installation, Fixing, Cut	<p>Preliminary works Remove dust and adhesion-reducing residues from decorative and facade profiles, adjust length if necessary.</p> <p>A cross-cut or miter saw is recommended for cutting. Prior to processing, an installation plan must be drawn up.</p> <p>Installation Glue "Capatect Capapor Rahmen-, Gurt- und Gesimsprofile" to the load-bearing, level substrate using "Capatect Capapor Profilkleber 121/109". If necessary, cut the profiles neatly using a miter saw or cross-cut saw. Remove dust from decorative profiles and interfaces prior to installation. Prior to installation, the edges of the decorative and facade profiles to be coated must be broken by the customer using a remnant piece or sanding block.</p> <p>Primer Prime the end faces of the profiles in the area of the butt joints and connecting joints (joint edges) with "CapaSol Konzentrat" diluted 1:2 with water before jointing. Practical tip: Prime joint edges already before bonding.</p> <p>Bonding Apply Capatect Capapor Profilkleber 121/109 over the entire surface with a toothed trowel (toothing 8 to 10 mm) to the substrate and to the back of the profile (floating-buttering method). The profiles are always bonded over the entire surface. Float in the profiles with slight pressure and press on firmly, securing against slipping if necessary. The circumferential joint of the decorative and facade profiles must be sealed with profile adhesive. Seal the adhesive joints by smoothing the profile adhesive with a moistened brush. The upper horizontal connection joint to the substrate must be executed with a fillet. Glue miters and offsets together over the entire surface. Clean reinforcement layers soiled with profile adhesive with water immediately after application, otherwise adhesion problems of mineral finishing plasters may occur.</p> <p>Additional mechanical fastening For profile projections > 150 mm or for a ratio of profile height to overhang < 2, additional mechanical fastenings are required. After curing of the adhesive, anchor the large-format special profiles with 2 - 3 "Capatect Dekorprofildübel 677" per m in the load-bearing substrate (edge distance min. 100 mm). Pre-drill the profile to a depth of at least 20 mm using a Forstner drill or hardware drill (NW 20 mm). The recess may be drilled to a maximum depth of at least 50 mm profile thickness in this area. Align the profiles and drill into the load-bearing substrate. If necessary, remove drilling dust. Insert the anchor (and foam cap, if applicable) into the drill hole and close the drill hole with "Capatect Capapor Profilspachtel 121/110". Grind "Capatect Capapor Profilspachtel 121/110" flush with the surface.</p> <p>Fastening with "Capapor Montagekonsole" The ratio of profile height to overhang is limited to ≥ 1. "Capapor Montagekonsole" are recommended for decorative and facade profiles with a weight > 4.5 kg/m and/or an overhang > 80 mm. The additional mounting strip is fully bonded to the load-bearing substrate with "Capatect Profilkleber 121/109" before mounting the profile and, if necessary, additionally mechanically fastened with at least 2-3 pcs/m "Capatect Dekorprofildübeln 677" after sufficient drying of the adhesive.</p> <p>Rows and connections Joint edges primed with "CapaSol Konzentrat" must be dry. Building perimeter facade profiles or several profiles to be installed one after the other with a thickness > 20 mm must not be butted tightly. Decorative and facade profiles with a thickness > 20 mm are installed with an open butt joint of approx. 10 mm. Fill the open butt joints with "Capatect Füllschaum B1 056/00" after 24 hours drying time at the earliest. After hardening of the filling foam, scrape out the joint to a depth of approx. 10 mm and joint with "Capatect Fugenmasse MS" flush with the surface. Seal side terminations and horizontal wall junctions of decorative and facade profiles running around the building or in rows with "Capatect Fugenmasse MS". Joints to other building elements, e.g. windows, are to be made with backfill cord and "Capatect Fugenmasse MS". The joint width must be dimensioned in accordance with DIN 18540.</p>

Application

Painting and reworking

The joints and bondings of the decor and façade profiles must be dry. Remove dust and adhesion-reducing residues. Coat with suitable façade paint, e.g. "Caparol ThermoSan NQG", "Sylitol® NQG" or "AmphiSilan Fassadenfarbe" at least twice. Observe product information of the façade paints. For dark color shades with a Light Reflectance Value (LRV) < 20, a TSR value of ≥ 25 % must be observed. Fine hairline cracks or shrinkage cracking in the joint area of the decor and façade profiles do not represent a technically functional defect and are therefore not objectionable. Minor damage to the profiles can be repaired with "Capatect Capapor Profilspachtel 121/110".

Horizontal profile surfaces

Horizontal profile surfaces with an overhang > 20 mm must be designed with a slope of more than 5° or 8 % leading away from the facade. Depending on the profile geometry and thickness, drip edges should be provided where possible.

Plinth area

"Capatect Capapor Rahmen-, Gurt- und Gesimsprofile" require special measures for moisture protection in plinth areas. A minimum distance of 10 mm must be provided between the profile end or the profile soffit and the ground level. "Capatect Capapor Rahmen-, Gurt- und Gesimsprofile" must be protected with an additional moisture protection layer of "Capatect SockelFlex" or "Capatect SockelFlex Carbon" up to a minimum of 50 mm above ground level. This area must be primed in advance with "CapaSol Konzentrat" diluted 1:2 with water. In plinth areas up to 300 mm above ground level or adjacent horizontal building parts, "Capatect Capapor Rahmen-, Gurt- und Gesimsprofile" should be impregnated with "Disboxan 450 Fassadenschutz" prior to paint application.

The Capapor decor and façade profiles mainly consist of mineral based raw materials. For any coatings etc. it is recommended to orientate by mineral based finishes. Request for further advices in case of different application.

The feasibility of special designs must be clarified in advance. The graphically elaborated special profiles must be checked and approved by the customer before acceptance of the order.

Available dimensions:	
Weight	max. 40 kg/element, Klebefläche: max. 40 kg/m ²
Length	max. 2.250 mm/element
Length (> 19 kg/m)	max. 1.120 mm/element
Overhang	max. 520 mm/element

For extended/ special applications please ask for processing recommendations.

Thinner and larger-format "Capatect Capapor Frame, Belt or Cornice Profiles" generally place higher demands on the evenness of the installation surface in order to prevent the risk of breakage and to ensure full-surface installation. To increase the installation safety, site installation tests are recommended in advance.

Weather protection

As with traditional façade profiles, Capapor decorative and façade profiles that are exposed to the weather and have projections >150 mm must be provided with covers, e.g. sheet metal flashings, in accordance with the "Fachregeln für Metallarbeiten im Dachdeckerhandwerk". The functionality of this weather protection must be permanently ensured.

Horizontal surfaces

Alternatively, the horizontal surfaces may be coated with "Capatect SockelFlex Carbon" or "Capatect SockelFlex", fabric inlay with "Kobau Elastic-Gewebe 10/10" and "Disbon 404" (min. two coats). This area must be primed in advance with "CapaSol Konzentrat" diluted 1:2 with water. Horizontally laid facade profiles without additional sheet metal covers have an increased tendency to fouling.

Joints

Profile joints are usually visually recognizable. Hairline cracks in the paint system occurring above profile joints do not impair the function.

Loads

Capatect Capapor facade profiles are designed to take dead loads, wind loads and snow loads. Additional loads, e.g. from foot traffic on the facade profiles, are not permissible.

Fire behavior

Depending on the area of application and the coating system used, a different fire behavior classification may be possible. The fire behavior classification given applies only in combination with Caparol Sylitol NQG.

Advice

Disposal

Cutting residues must be prepared in accordance with EWC 170904 (mixed construction and demolition waste). Respect national and regional rules and regulations.

Risk and Transportation Markings

Do not throw; transport on a flat surface; separate several profiles by cardboard etc. to prevent damage to the coating, protect edges especially.

Customer Service Centre

Tel.: +49 6154 71-71710
Fax: +49 6154 71-71711
e-mail: kundenservicecenter@caparol.de

International Distribution: Please see www.caparol.com

Technical Information No. 121/010-011 · Issue: September 2022

All suggestions and application instructions herein are based on our latest technical experience. Due to the wide variety of individual project conditions, we cannot be held responsible for their content. These instructions do not release the purchaser/ applicator from his responsibility to determine the suitability of the product in consideration of the project characteristics. These instructions are to be considered void when a new edition is released. Our general conditions of sale and delivery in their latest edition apply. This document is a translation of our German Technical Information No.121/010-011 · Capatect Capapor® Rahmen-, Gurt- und Gesimsprofile 121/010-011 · Issued: August 2022